

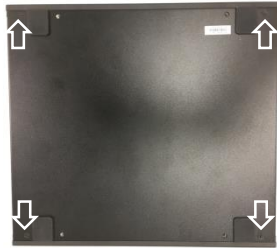
# MX1-10FEP-D

## Quick Assembly Guide



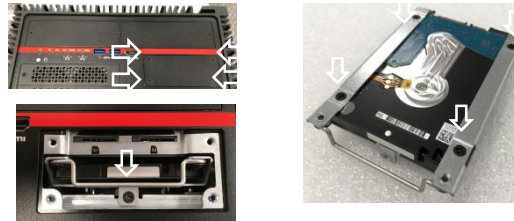
5615D8050002

### Open Bottom Cover



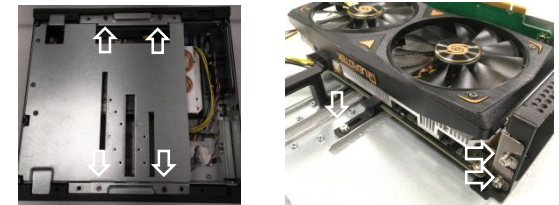
1. Loosen M3 screws(x 4) from Bottom cover as the arrow locations.

### Install/Remove Removable 2.5" HDD



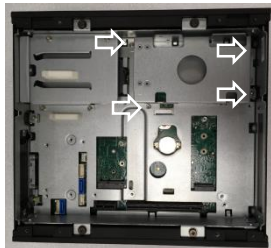
2-1. Loosen M3 screws(x 4) from HDD cover.  
2-2. Remove M3 screw from bracket.  
2-3. Pull/push HDD bracket by handle bar.

### Assembly of PCIe Bracket and Holder



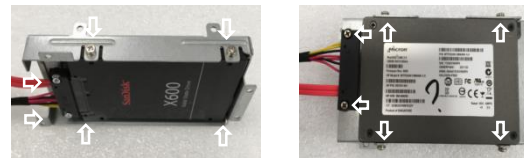
3-1. Loosen M3 screws(x 4) from PCIe bracket.  
3-2. Install PCIe card and fix with M3 screws( x 2).  
3-3. Fix Holder to hold card with M3 screw (x 1).

### Disassemble Internal SSD Bracket



4. Loosen M3 screws(x 4) as the arrow directions.

### Install 2.5" SSD into Internal SSD Bracket

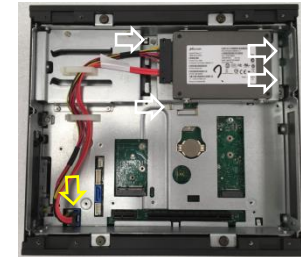


(Bottom)

(Top)

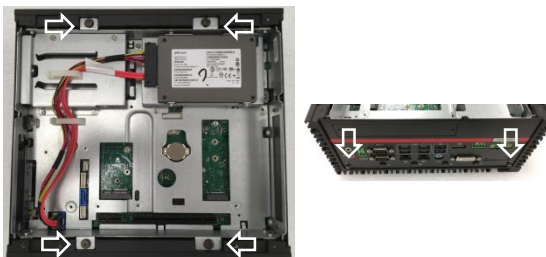
5. Tighten M3 screws(x 4, pack 452D80500006) for 2.5" SSD and M2.5 screws(x 2, pack 452D80500005) for SATA cable.

### Fix Internal SSD Bracket



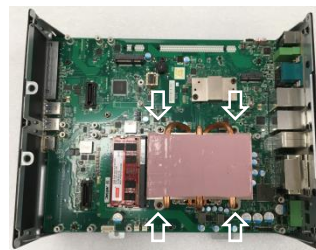
6. Tighten M3 screws(x 4) for internal SSD bracket and insert SATA cable to main board.

### Disassemble Mid-Frame



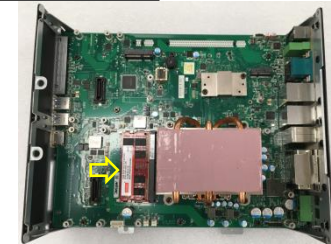
7-1. Loosen M4 screws(x 4) from Mid-Frame.  
7-2. Loosen M3 screws(x 2) from Rear-Cover.

### CPU Heat-sink Installation



8. Fix CPU heat-sink by M3 screws(x 4, pack 452D80500002) as arrow shown.

### DRAM Installation



9. Install DRAM with thermal pads. (thermal pad 345D80500011 between two DIMMs, thermal pad 345D80500012 between bottom DIMM and PCBA)